

Call for Artists Pages of Port Washington

2025 Community Mural
Paint on Port

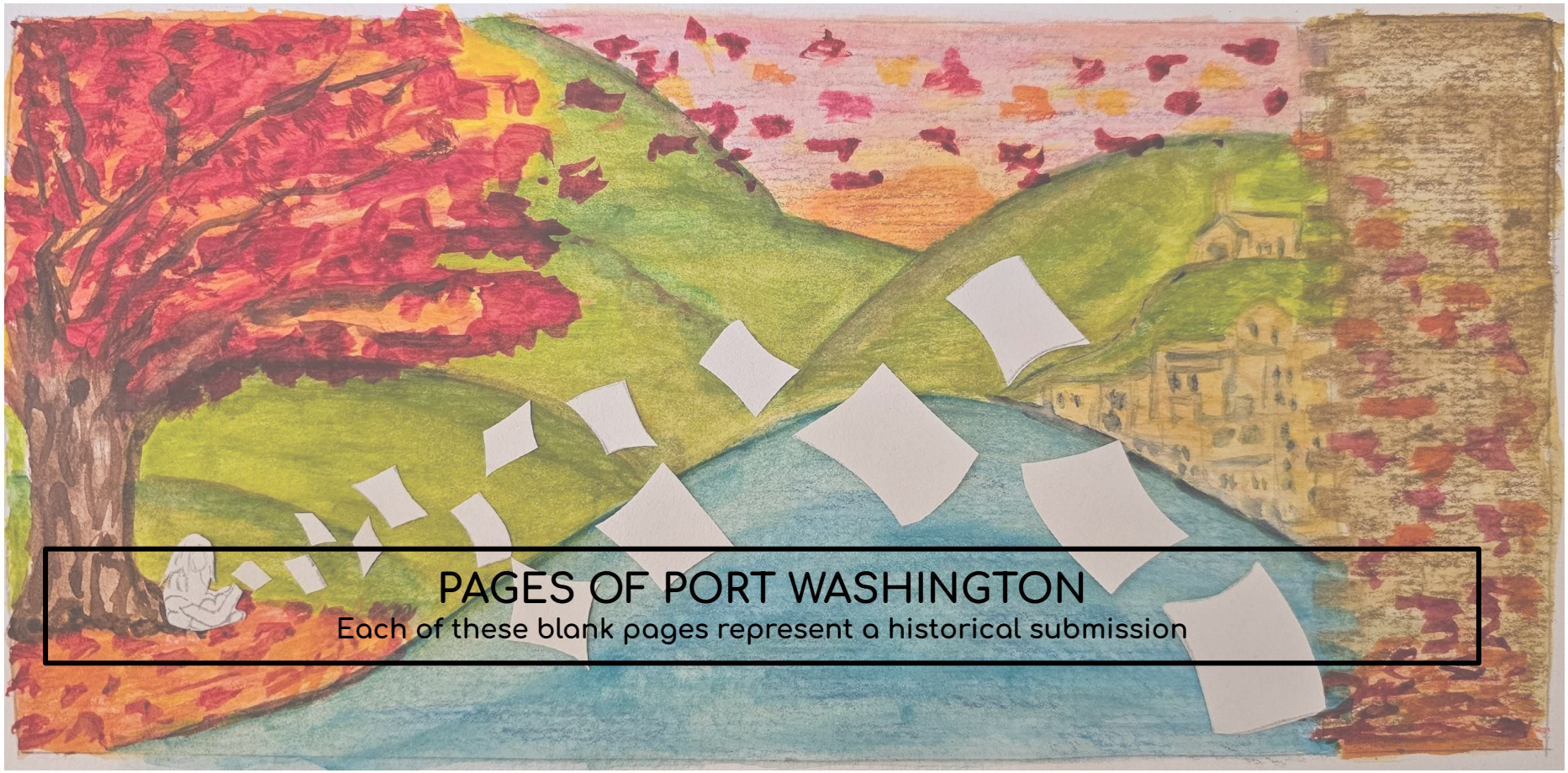


Introduction to Pages of Port Washington Community Mural

In our third and final year, Paint On Port (POP) is seeking local artists to design and create parts of the 2025 Community mural titled Pages of Port Washington. Our goal is to collaborate with local artists to highlight historic themes in our community that we value and inspire us to live in Port Washington as well as create a unique visual arts experience.

We appreciate our community's rich history, indigenous heritage, lakefront, harbor, quaint historic buildings, industry, farmlands and people. Our Franklin Street Historic Downtown District boasts the largest collection of Pre-Civil War buildings in the state of Wisconsin. Our current and historic fishing industry, boating, beach and maritime activities are core to life in our community and our story.





PAGES OF PORT WASHINGTON

Each of these blank pages represent a historical submission

Call for Artists: Community Pages

Designs are being sought for community polytab pages within the mural. Design will be completed in black outline design on a 9" x 12" white paper and the artist may include a vintage colored example. Timeline on slide 14.

Process: Design a historic montage page. Design may include a timeline of multiple decades. Choose one theme from these options:

1. City of Seven Hills themed, farming and life in the city and town of Port Washington
2. Industry themed: Nod to brewery, manufacturing, equipment, power plant, banking, stores, restaurants
3. Recreation themed: Lighthouses, fishing, Interurban trail, parks, beaches, library, natural areas, pools, etc.

Winning artists will receive a \$100 honorarium and can take part in the community paint initiative. The design will be enlarged to a maximum size of 5' x 7'. Artist may submit more than 1 drawing or design. We may ask to use your design on the individual polytab pages (see slide 5).

POP artists will work with generations of Port Washington residents to take a paint by number approach to selected work. Locations may include schools, Studio 224, Gallery 224, the library, the senior center.

Designs will be submitted at Gallery 224 303 N. Franklin St. Port Washington, Wi 53074

and will be on display or consigned the month of June.

Call for Artists: Individual Painted Pages

Design submissions will be for 10 historic pages featured within the mural (see slides 6 - 13 for examples). Timeline on slide 14.

Winning artists will recreate their work for permanent page on the community mural.

Process: Design a 9" x 12" historic page representing Port Washington. Design submissions must be in color.

Artwork will be selected by POP Murals committee and we may ask to apply your design to the community mural. Winning designs will be painted by the individual artists, using acrylic paint, on polytab pages that are provided by POP. Winning designs, recreated by the artist, will be part of the mural installation.

If your submission is selected for an individual page you will receive \$100 honorarium for a 9" x 12", \$150 honorarium for an 18" x 24" painting, or \$200 honorarium for 36" x 48" painting.

Designs will be submitted at Gallery 224 303 N. Franklin St. Port Washington, Wi 53074

and will be on display or consigned the month of June.

Themes for Individual Pages

- Fishing, boats, shipping (no lighthouses)
- Industry ie Chair Factory, Simplicity, Bolens, cream city brick making
- Settlers, immigration
- Farming
- Smith Bros/Ewigs
- Beer history, saloons, bars
- Indigenous People Sauk and Chippewa. Port was communal hunting grounds
- Firehouse, early history, current use.

Criteria

- Acrylic paints
- Unifying element will be gilded border
- Color palette: vintage colored postcard/photographs (see sample page 7)
- Emote historical/vintage feel
- Questions, or need more photo references? Contact Wendy at kikibraam@gmail.com or Sherri at sherkultgen@gmail.com

Bird's-eye View looking South-east from top of Engine House,
Pt. Washington, Wis. B. I.



MILWAUKEE DIV. T.M.C. CO.

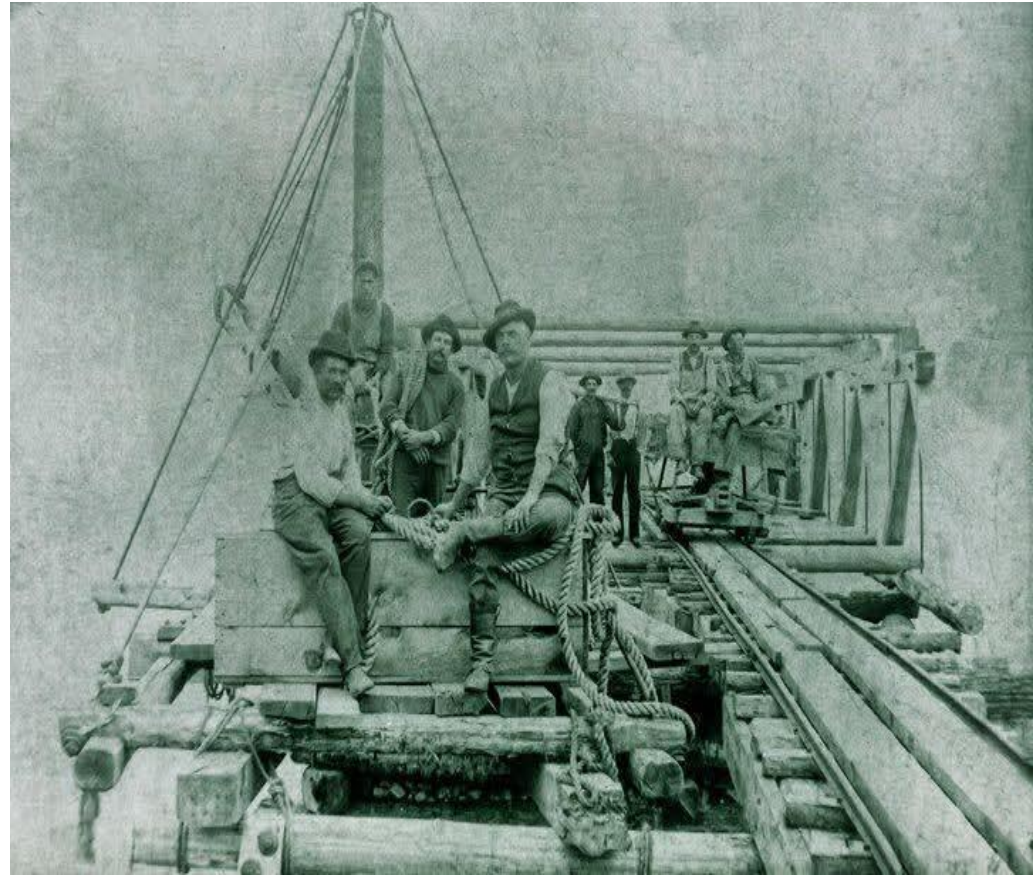
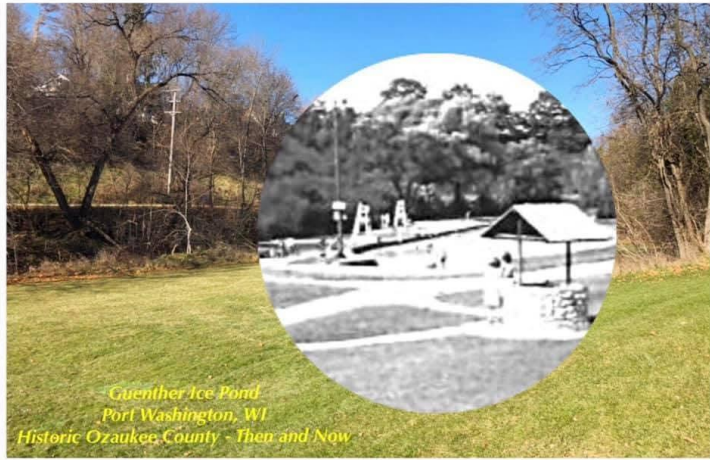
0000.1102.013 Print, Photographic

Port Washington Historical



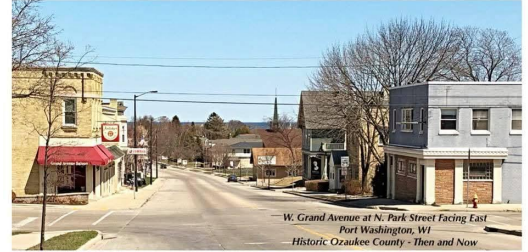
A BUSY DAY
PORT WASHINGTON WIS







Wisconsin Chair Factory Fire
Franklin Street looking north from Bridge Street
Historic Ozaukee County - Then and Now



W. Grand Avenue at N. Park Street Facing East
Port Washington, WI
Historic Ozaukee County - Then and Now



Port Washington, WI
1890-2019
Historic Ozaukee County - Then and Now





March 1956 - Herbert Ewig's Fish Market - Harry Klein in front



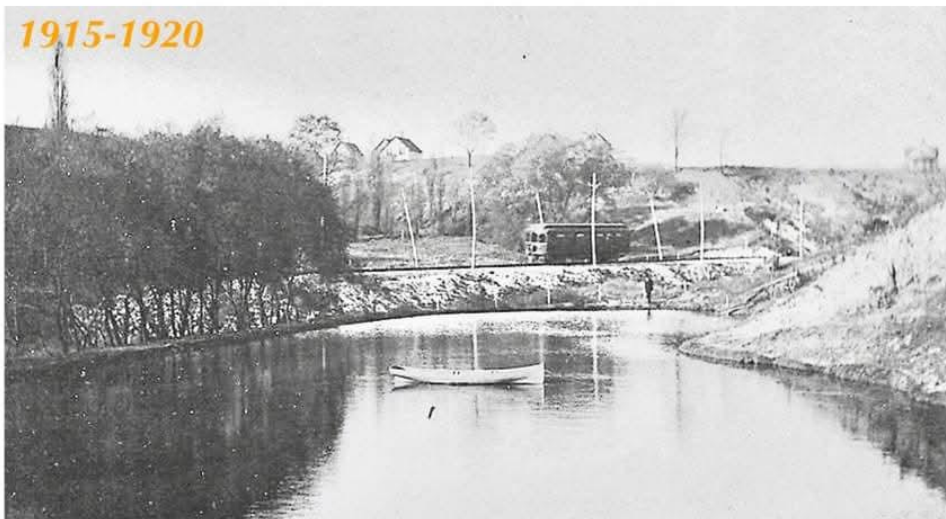
*Ewig Brothers Fish Company
Historic Ozaukee County - Then and Now*

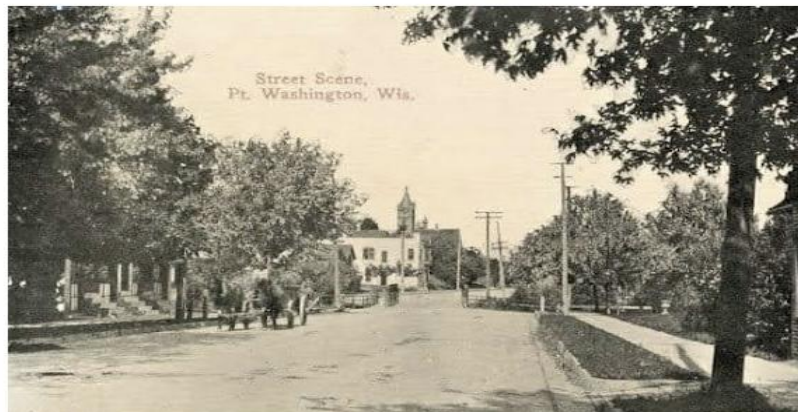
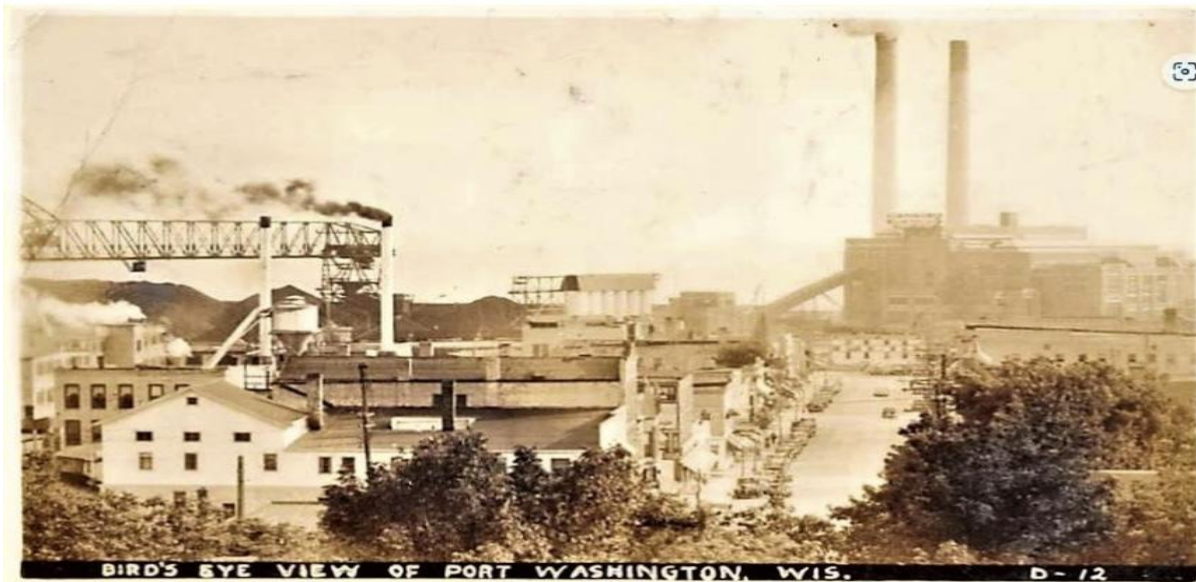


*Smith Brothers Fish Net House (c. 1940/2022)
Historic Ozaukee County - Then and Now*



*Ewig Brothers Fish Company
Historic Ozaukee County - Then and Now*





5610

ST. MARY'S CHURCH, PARISH, HALL AND SCHOOL, PORT WASHINGTON, WIS.



Bird's-eye View looking North-west from top of Bluff,
Pt. Washington, Wis. A. 1



© C. KROPP CO. PUB. MILWAUKEE

Timeline: Community Call for Artists

Call for Artists

By Feb 15, 2024

Public announcement, email etc out to artists, community, schools etc

Submissions

April 15, 2025

Hard deadline for design submissions

Announce

April 30, 2025

Artists selected may pick up page from Gallery 224 or arrange for delivery.

Pages Due

May 30, 2025

Completed artwork to Gallery 224. Artwork will be on display and may be consigned through June 30